

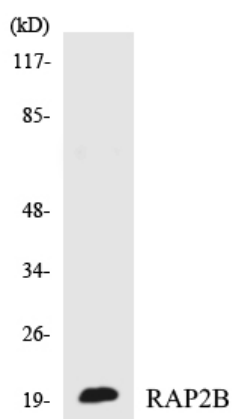


Rap 2B Polyclonal Antibody

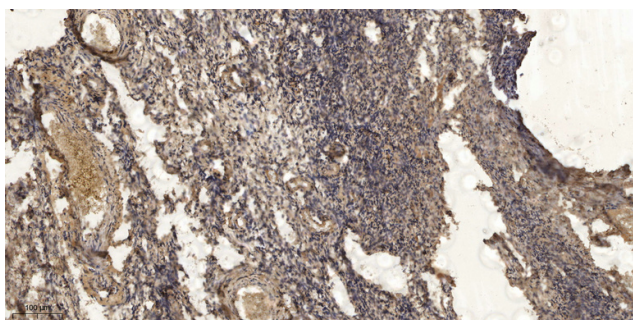
| | |
|----------------------------------|--|
| Catalog No | YP-Ab-16224 |
| Isotype | IgG |
| Reactivity | Human;Mouse;Rat |
| Applications | WB;IHC |
| Gene Name | RAP2B |
| Protein Name | Ras-related protein Rap-2b |
| Immunogen | The antiserum was produced against synthesized peptide derived from human RAP2B. AA range:98-147 |
| Specificity | Rap 2B Polyclonal Antibody detects endogenous levels of Rap 2B protein. |
| Formulation | Liquid in PBS containing 50% glycerol, 0.5% BSA and 0.02% sodium azide. |
| Source | Polyclonal, Rabbit,IgG |
| Purification | The antibody was affinity-purified from rabbit antiserum by affinity-chromatography using epitope-specific immunogen. |
| Dilution | WB 1:500-2000;IHC-p 1:50-300 |
| Concentration | 1 mg/ml |
| Purity | ≥90% |
| Storage Stability | -20°C/1 year |
| Synonyms | RAP2B; Ras-related protein Rap-2b |
| Observed Band | 18kD |
| Cell Pathway | Recycling endosome membrane ; Lipid-anchor ; Cytoplasmic side . Associated with red blood cells-released vesicles. |
| Tissue Specificity | Expressed in red blood cells (at protein level). |
| Function | domain:The effector domain mediates the interaction with RUNDC3A.,similarity:Belongs to the small GTPase superfamily. Ras family.,subunit:Interacts with PLCE1. Interacts with SGSM1, SGSM2 and SGSM3. The GTP-bound form of RAP2B interacts with RUNDC3A., |
| Background | This intronless gene belongs to a family of RAS-related genes. The proteins encoded by these genes share approximately 50% amino acid identity with the classical RAS proteins and have numerous structural features in common. The most striking difference between the RAP and RAS proteins resides in their 61st amino acid: glutamine in RAS is replaced by threonine in RAP proteins. Evidence suggests that this protein may be polyisoprenylated and palmitoylated. [provided by RefSeq, Jul 2008], |
| matters needing attention | Avoid repeated freezing and thawing! |

**Usage suggestions**

This product can be used in immunological reaction related experiments. For more information, please consult technical personnel.

Products Images

Western blot analysis of the lysates from COLO205 cells using RAP2B antibody.



Immunohistochemical analysis of paraffin-embedded human oophoroma. 1, Antibody was diluted at 1:200(4° overnight). 2, Tris-EDTA, pH9.0 was used for antigen retrieval. 3, Secondary antibody was diluted at 1:200(room temperature, 45min).